



## SatinSheet System

The in-bed system for  
turning and positioning

etac | RB2 



## Introduction to the SatinSheet in-bed System

SatinSheets are the complete in-bed system for turning and positioning users with a range of needs. This workbook includes “how to” videos, a look at single handed care, independent and incontinent users, pressure care, use with children and a new base sheet selector.

SatinSheets work for people who are active and just need some assistance with re-positioning themselves through to those who need full time care from family or professional carers because they are unable to move themselves.



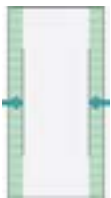
A general guide too using SatinSheets



Always carry out a risk assessment before using SatinSheets

- A simple, intuitive system that unobtrusively fits into the bedroom environment
- Comfortable bed sheets, natural to sleep on,
- Minimises friction under pressure points on the body which reduces skin damage caused by shearing that can lead to pressure sores.
- Helps the person lying on them get a good night’s sleep. Turning and repositioning becomes easier so pressure is relieved on joints caused by being static.
- Also protect the backs of carers!

## What Makes up the SatinSheet System?



**Start with a 2Direction BaseSheet** fitted directly to the mattress. BaseSheet has a low friction sliding rea (satin) in the centre allowing independent side to side movement. Longitudinally the BaseSheet has high friction edges to minimise the risk of the user sliding off the bed.



**Add the 2Direction DrawSheet** for a partly dependent user who needs ssistance with side to side movement. The DrawSheets are designed to be used on top of the BaseSheet. They do not work on their own.



**Add the 4Direction DrawSheet for a dependent user** who needs assistance moving in all directions. The DrawSheets are designed to be used on top of the BaseSheet . They do not work on their own.

## Moving a User Higher up in Bed

Patients can often slip down in bed. The SatinSheet system allows a user to be easily moved back up a bed with 1 or 2 carers. If the patient is able, they can push on their legs to assist their carer. If they are unable, the carer can move the patient easily due to the low friction sheets which prevent shearing to the patients skin.

Once they have been moved back into position, the sheets can be “locked” to ensure the preferred position is maintained whether the mattress is flat or the back rest is raised.



2 carers moving a user higher up the bed and locking to stop sliding



Fitting BaseSheet and DrawSheet



## Turning a Patient

Turning a patient to carry out personal care or to relieve pressure is made safer for the carer and more comfortable for the user.



Find out more about our Satin-Sheet system



See how to turn a patient with a single carer and ceiling hoist





# Slide Sheets for everyday needs

## Single Handed Care

There are significant benefits in using products that promote single handed care, including lower costs and a positive impact on a users privacy and general well being.

The Satin Sheet system enable users to be moved safely, with minimal disruption, with and without a hoist.



## Incontinent users

The Immedia In2Sheet is an incontinence pad with a low friction underside. It is used on top of a cotton bed sheet with the satin low friction surface facing down. This reduces friction side to side so enables an incontinent user with limited mobility to be turned easily.

The In2Sheet has a large incontinence pad to protect a larger area in the bed. (1050mm x 1250mm). The In2Sheet also has handles along the sides for a better grip (and for use with a hoist if required)

Incontinence pads can also be used with the SatinSheet system.



SatinSheets can be washed in a domestic washing machine at temperatures of up to 80 degrees and can be tumble dried at a low temperature.

See how to move a user higher up in bed with OneManSling

How to secure a OneManSling for positioning a user

See how to turn a patient on their side using the In2Sheet

See how to move a patient higher up in bed using the In2Sheet

## Independent Users

SatinSheets can be used independently to help turn and reposition at night.

People who have slight mobility restrictions caused by weight, age or a medical condition lie directly on the base sheet (double or single bed). By wearing cotton or polyester/cotton nightwear the friction required to turn in bed is reduced but they will not slide down the bed.



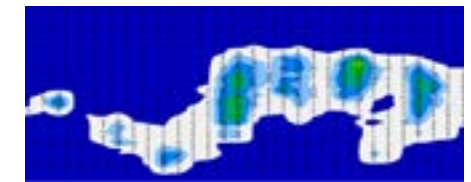
Double bed - couple sharing

Double bed - single user

## Pressure Relief & Shear Reduction

In the UK, pressure ulcer care costs £1.4bn – 2.1bn per year. More than 90% of the cost of treatment is the cost of nursing time.

The best way to prevent pressure ulcers is pressure distribution and minimising shear and friction and also frequent repositioning. The SatinSheet system reduces the amount of handling required to move a client as it



stays on the bed. It can help as part of the treatment of existing pressure sores and reduces the risk of developing pressure sores.

Read our pressure mapping report

Watch how to stretch the draw-sheet to remove wrinkles

Compare Satin-Sheet on a stand-ard and pressure relieving mattress



## SatinSheets for Children



SatinSheets can also be used with children. They allow mum or dad, to turn single handedly for personal care or reposition a child with minimal disruption.

Julie Graham, Therapeutic Positioning Advisor at Simple Stuff Works, has worked with one of our Sales Managers to trial SatinSheets alongside their sleep systems. She was amazed at how well they worked compared to others she had tried. "It worked fantastic for carers having to move a client on their own".

The sleep system fits between the SatinSheet Base sheet and Top sheet. The child can easily be repositioned to change point of pressure with minimal disturbance as the Sleep System stays in place.



 **Find out more about Simple Stuff Works** 

 **See our range of childrens products** 

## Helpful Accessories

### Positioning Wedge

The Positioning Wedge supports the patient on their side and avoids the carer being in a static holding position. It is used after turning, when resting, for personal hygiene and wound care.





### MultiGlide Glove

"It's like an extra pair of hands". The MultiGlide Glove allows the carers hand to be placed easily between the patient and cushion/mattress for small repositioning movements.



### Don't forget the SatinSheet Pillow Case!

 **Find out more about the Positioning wedge** 

 **Find out more about the Multi-Glide Glove** 

## Base Sheet Selector

For use on standard single bed



**Mini** - slide area is from shoulders to knees or hips or lower legs only. For use with an independent or partly independent user. Commonly where there is localised difficulty in moving or turning. The base sheet should be used with a DrawSheet

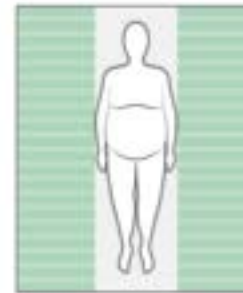


**Midi** - slide area is from head to knees or lower half of the body for use with a partly dependent user with reduced mobility who needs assistance with moving or turning. The BaseSheet should be used with a DrawSheet 2Direction or 4Direction.

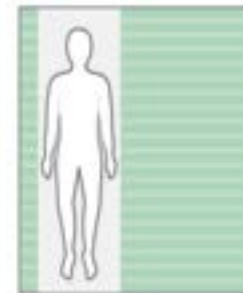


**Maxi** - the slide area covers the full length of the bed and is for users that are partly or fully dependent. Can be combined with a DrawSheet 2Direction or 4Direction.

For use on double and king size beds



**Double** - for wider double and king size beds. Suitable for single user lying in the centre of a double bed or for a larger user on a bariatric bed. Can be combined with a DrawSheet 2Direction or 4Direction. Available in mini, midi and maxi length



**Maxi Double Offset** - For wider double bed and king size beds. Used for a single user or a couple sharing where one person has difficulty turning. The satin area is offset to one side. It can be used on its own or combined with a DrawSheet 2Direction or 4Direction.

### SatinSheet Sizes



Satin sliding area: the width of the satin is defined by the users and/or width of the bed.  
**Small:** 60/65cm satin  
**Standard:** 70cm satin  
**Double offset:** 90/96cm

# The Etac Group

**etac** | **imedia** | **molift** | **STAR** | **Convaid** | **R82**

The Etac Group is a leading developer of mobility equipment and solutions in Northern Europe and one of a handful of leading players on the global scene. The Etac Group product brands are R82 (Paediatrics), Convaid (Paediatric buggies), Molift (Hoists and Slings), Immedia (Manual transfer) and Etac (Wheelchairs, Bathing and Toileting, Aids for Daily Living) and Star Cushion Products Inc (pressure care).

## Workshops

We offer a range of free, hands on, practical workshops tailored to suit your needs and timings.

- **Moving and Handling Solutions**
- **Selecting the Right Hoists & Slings**
- **Overhead Hoisting Problem Solving**
- **Sit to Stand Solutions**



**Book your workshop now!**



**More details  
about our free  
workshops**



**Complete the  
contact form**



## Contact our Sales Team

Adam Kew (NE & E Mids)

Mobile: 07818 507282

Email: [adke@etac.uk.R82.com](mailto:adke@etac.uk.R82.com)

Steven Mather (NW & N Wales)

Mobile: 07929 369872

Email: [stma@etac.uk.R82.com](mailto:stma@etac.uk.R82.com)

David Wilson (SW, S Wales, W Mids)

Mobile: 07870 836248

Email: [dwi@etac.uk.R82.com](mailto:dwi@etac.uk.R82.com)

Mahesh Shenoy (SE & London)

Mobile: 07826 068329

Email: [msh@etac.uk.R82.com](mailto:msh@etac.uk.R82.com)

Karen Clark (East England)

Mobile: 07946 351141

Email: [kcl@R82.com](mailto:kcl@R82.com)

Colin Williams (Overhead Hoists)

Mobile: 07967 564298

Email: [cowi@etac.uk.R82.com](mailto:cowi@etac.uk.R82.com)

Alex Hazlett (N England, Scotland)

Mobile: 07483 065107

Email: [alha@etac.uk.R82.com](mailto:alha@etac.uk.R82.com)

Contact us

Tel: 0121 561 2222

Email: [education@etac.uk.R82.com](mailto:education@etac.uk.R82.com)

Visit: [etac.com/uk](http://etac.com/uk)

**etac** | **R82**