



ProCair[®] Pressure Care Mattress Range

The leading range of alternating pressure care mattresses
for the prevention and treatment of pressure injuries



CPR
First Aid
Resuscitation

NOVIS
ProCair Prime

NOVIS ProCair Prime
ALTERNATING MATTRESS
REPLACEMENT
2018 x 1000 x 100 mm
110 kg
150 kg
150 kg



NOVIS

Made in Taiwan for
Novis Healthcare Pty Ltd

Unit 12/12 Mars Road Lane Cove
NSW 2066 Australia
Pressure care and patient
handling specialists
novis.com.au / 1300 738 885



With decades of experience, Novis is a leader in pressure care solutions.

Our ProCair® range of electric alternating pressure mattresses is designed to prevent and manage pressure injuries while delivering optimal comfort and support for at-risk individuals.

With hospital-grade quality, intuitive controls, and advanced features like automatic weight sensing, CPR valve, bed exit alarm, and battery backup, ProCair® offers tailored care across all risk levels.

Built for both acute and long-term care, ProCair® provides reliable, innovative support—when and where it's needed most.

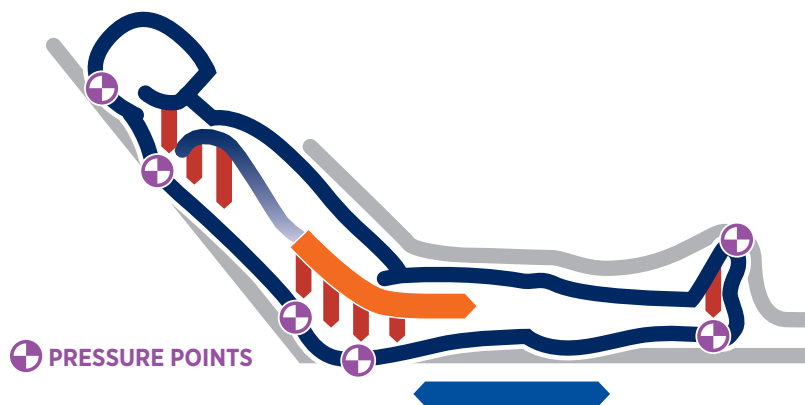
ProCair® Reduces Pressure Injury Risk

Pressure injuries are a serious challenge in all care settings. The ProCair range of advanced, hospital-grade alternating pressures mattresses, by Novis, is designed to support effective prevention and management of pressure care injuries. Delivering consistent pressure relief and personalised support, ProCair® helps reduce risk while enhancing patient comfort and care outcomes.

Pressure Injury

A pressure injury is defined as “a localized damage to the skin and /or underlying tissue which occurs as a result of direct pressure, or a combination of pressure and shear forces”¹

Pressure and shear cause localised deformation to the cells in the tissue, which results in tissue breakdown². Their damaging effects can be compounded by friction, heat and moisture.



Pressure

Pressure is a perpendicular force applied over a given area.

Shear

Shear is a force that occurs parallel to the surface.

Friction

Friction is an injury that occurs when one surface moves over another.

Pressure injury combination

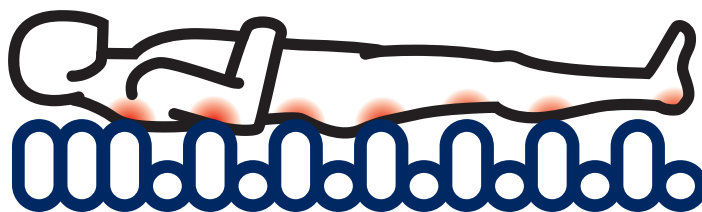
Complex, multidirectional strain on the tissue

Support Surfaces

A support surface is a surface on which the patient is placed to manage pressure, load, shear, friction and microclimate³ with the goal of preventing and/or treating pressure injury.

Reactive support surfaces are designed to reduce interface pressure through increasing the body surface area, thus facilitating pressure reduction. In response to applied pressure, the support surface distributes interface pressure over a wider body area through immersing and enveloping the patient. They can also be referred to as pressure redistribution, static or constant low pressure support surfaces.

An active (alternating/dynamic) support surface is a powered support surface, with the capability to change its load distribution properties, with or without load³. Active support surfaces proactively remove the contact interface pressure between the body and the support surface. This process is referred to as 'off-loading' and is achieved by the use of air cells that are cyclically inflated and deflated using an external power source, such as an electronically controlled air pump.



The components of the individual active mattress will determine the degree in which it provides a therapeutic solution for pressure injury prevention and management. Active support surfaces vary by several objective parameters. NPUAP 4 published a list of performance criteria for all therapeutic support surfaces which considered that, alongside basic cell configuration, active surfaces have four clinically important, interdependent and measurable performance characteristics – cycle frequency, duration, amplitude and rate of change.

Individual Tissue Tolerance Factors

An individual has a specific tissue tolerance in which they can be exposed to pressure and shear without tissue damage. This tolerance can be influenced by many factors including age, BMI, nutritional status, and presence of co-morbidities. Factors contributing to an individual's inability to attend to natural repositioning to avoid pressure injury may include:

- ~ Immobility
- ~ Cognitive impairment
- ~ Reduced sensation
- ~ Decreased activity levels
- ~ Communication barriers
- ~ Reduced tissue tolerance

Figure 1 Actual Interface Pressure at Sacrum – Average Pressure vs Cycle Time

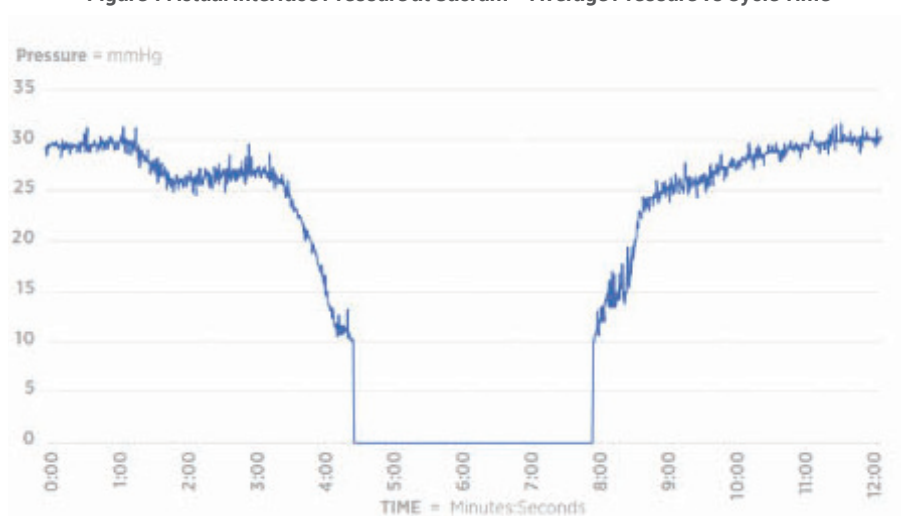
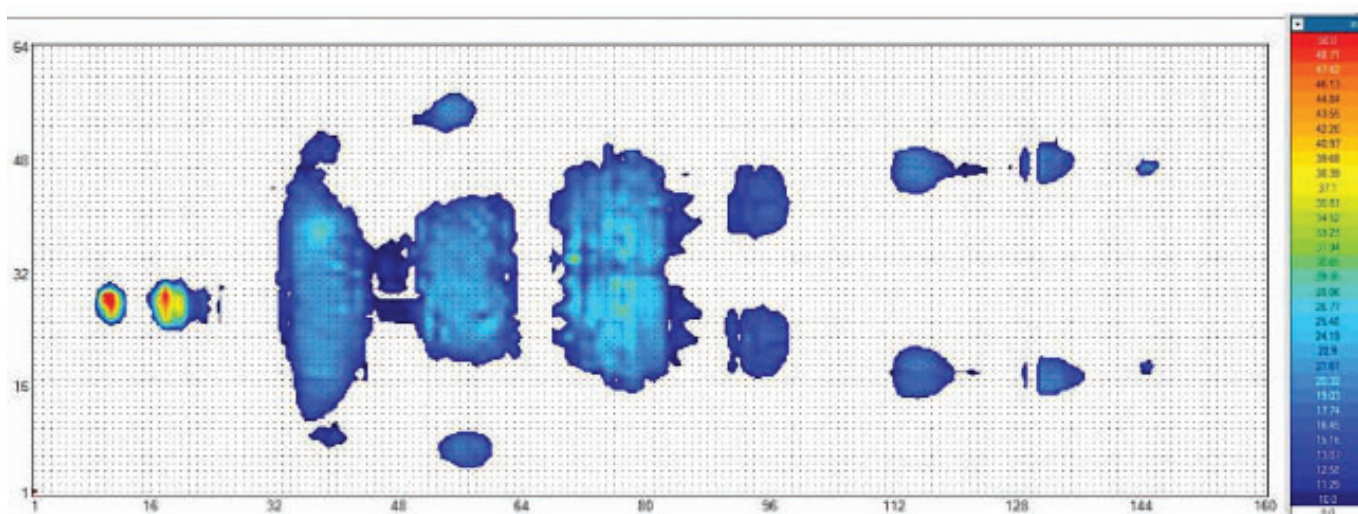


Figure 1 demonstrates the rapid pressure drop-off experienced at the sacrum as the air cell directly under the sacrum deflates. Interface pressure begins to build again as the cell is re-inflated with air.

Figure 2 Pressure Mapping⁴



¹ European Advisory Panel, National Pressure Injury Advisory Panel and Pan Pacific Pressure Injury Alliance. Prevention and Treatment of Pressure Ulcers/Injuries: Clinical Practice Guideline. The International Guideline. Emily Haesler (Ed.). EPUAP/NPIAP/PPPIA. 2019. ² Gefen, A., Brienza, D., Cuddigan, J., Haesler, E. and Kottner, J. (2021). Our Contemporary Understanding of the Aetiology of Pressure Ulcers/Pressure Injuries. International Wound Journal. Vol 10. Issue 3. March 2022. ³ Australian Wound Management Association, Pan Pacific Guideline for the Prevention and Management of Pressure Injury. 2012 (4) NPUAP. Support Surfaces Standardisation Initiative. 2007 ⁴ More pressure injury reference: www.careofsweden.com/wp-content/uploads/2024/01/Action_Plan_Pressure_Ulcers_ENG_210609.pdf

ProCair Range



ProCair Plus

Designed for individuals at very high risk of pressure injury, this premium system delivers optimal therapy with advanced safety features, including a backup battery and enhanced error and service alerts.

SINGLE

APMPC-R02S

KING SINGLE

APMPC-R02SK



ProCair Quad

For individuals at very high risk of pressure injury. An advanced 1 in 4 alteration cycle mattress that supports 75% of the user's body during active therapy to deliver greater comfort and support.

SINGLE

APMPC-R04

KING SINGLE

APMPC-R04K



ProCair Trio

Designed for individuals at very high risk of pressure injury, this advanced 1 in 3 alternation mattress supports up to 66% of the body during active therapy, providing enhanced comfort and pressure relief.

SINGLE

APMPC-R05

KING SINGLE

APMPC-R05K



ProCair Prime

Ideal for those at high-risk of pressure injury, this versatile mattress system can be used as a fully alternating pressure mattress or easily converted to a hybrid foam mattress, and is equipped with an easy-to-use handset.

SINGLE	KING SINGLE
--------	-------------

APMPC-R03	APMPC-R03K
-----------	------------



ProCair Prime Advanced

This mattress features real-time auto weight sensing and a 5-hour inbuilt backup battery, ensuring uninterrupted, adaptive support, even during power outages. Lightweight and equipped with a carry bag, it's an ideal portable solution.

SINGLE	KING SINGLE
--------	-------------

APMPC-R03A	APMPC-R03AK
------------	-------------



ProCair Bariatric

With a 450 kg Safe Working Load, 1 in 4 alternation, and a fully sealed base for enhanced safety, the ProCair® Bariatric Mattress is designed for the treatment and prevention of pressure injuries in bariatric patients. Ideal for hospital, aged care, or home care settings, it delivers comfort, support, and reliability for individuals at very high risk.

KING SINGLE	WIDE
-------------	------

APMPC-B04S	APMPC-B04SW
------------	-------------

Novis Pressure Mattress Selection Guide

Does the person have a current or history of pressure injury?

No



Yes

Does the person need assistance repositioning themselves in bed every 20-30 minutes?

No



Yes

Clinical assessment required to determine pressure injury risk level

At Risk

Medium Risk

High Risk

Very High Risk



AreaCare Optimum



ProCair Plus



AreaCare Premium



ProCair Prime Advanced



ProCair Quad



AreaCare Comfort



ProCair Prime



ProCair Trio



CairMax Duo



ProCair Bariatric

This information is intended as a guide only, it does not replace thorough individual assessment advice or a qualified health professional or specific policies & procedures.

ProCair Mattress Features

AutoCair

Automatic weight sensing technology that continuously adjusts mattress pressure for safe, effective therapy, no matter the patient's position. Manual adjustments can still be made for personalised comfort.

Alternation

Dynamic 1-in-3 or 1-in-4 alternation provides effective therapy with improved stability and reduced movement sensation. Static head cells ensure a consistently comfortable pillow surface.

HeelCair

Increased protection and therapy for vulnerable heels with an independent heel zone made up of narrower disconnectable cells. This will provide full offload to the heels and achilles tendon.

SafetyCair

The ultimate protection from 'bottoming out', alternating air cells contain a lower 'safety cell' which remains fully inflated to provide greater surface stability and client safety.

ClimateCair

TPU cells provide a softer feel and increased immersion. Designed to redistribute heat away from the body to maintain the ideal microclimate for effective pressure care.

CairAlert

An inbuilt bed exit alarm that alerts caregivers when a patient leaves the mattress, ideal for those with cognitive impairment. Optional and easily disabled if not required.

FailSafe

Provides emergency back-up power, keeping the pump running and therapy uninterrupted for up to 5 hours during outages or patient transport.

AcuteCair

Maximise infection control with a fully sealed base, welded seams, and washable cover, designed to reduce bacterial risk and ensure patient safety.


EasyCair


Combined mattress and pump for easy setup, no bed end required. The integrated pump is protected from damage and the system is easily movable between beds.


DuoCair


Easily convert from a dynamic mattress to a hybrid mode for enhanced comfort. Switch back to dynamic mode for full pressure offloading when needed

Additional Safety Features

 **Static Side Bolsters** increase patient safety and stability, by reducing the risk of cell collapse at side edges when transferring out of the bed.

 **Fowler Boost** mode adjusts mattress pressure to provide increased support under the sacral area when the backrest is raised preventing risk of 'bottoming out' under the increased load.

 **Quick Release CPR** access, located at the head of the mattress, makes it easy to rapidly deflate the mattress for emergency CPR requirements.

 **Multi-Mode Alarm** settings and indicators warn of a range of potential faults to alert carers and minimise patient risk.

ProCair Specifications



Plus



Quad

	Alternation	1 in 2	1 in 4
	AutoCair Auto weight sensing	✓ Real-time	✓ Real-time
	HeelCair Narrow heel zone	✓ Disconnectable	✓ Disconnectable
	ClimateCair TPU cells	✓	✓
	SafetyCair Bottoming out protection	✓ Air Cell	✓ Air Cell
	CairAlert Bed exit alarm	✓	✓
	AcuteCair Sealed base	✓	✓
	EasyCair Integrated pump		
	DuoCair Optional hybrid mode		
	FailSafe Back up battery	✓	✓
	Side Bolsters		✓
	CPR	✓ Quick Twist	✓ Quick Twist
	Fowler Boost	✓ Automatic	✓ Automatic
	Service Indicator	✓	✓
	Weight Range	40 - 220 kg	40 - 250 kg
	Warranty	3 Year	3 Year
	Single Dimensions	2000 x 880 x 200mm	2000 x 880 x 200mm
	King Single Dimensions	2000 x 1050 x 200mm	2000 x 1050 x 200mm

Connect with one of our Product Specialists, or check the Data Sheet for each ProCair model to find detailed specifications, measurements, and complete feature information.



Trio

Prime

Prime Advanced

Bariatric

1 in 3

1 in 2

1 in 2

1 in 4

✓ Real-time

✓ Cyclic

✓ Real-time

✓ Real-time

✓ Disconnectable

✓

✓ Disconnectable

✓ Disconnectable

✓

✓

✓ Air Cell

✓ Foam Insert

✓ Air Cell

✓ Foam insert

✓

✓

✓

✓

✓

✓

✓

✓

✓

✓

✓

✓

✓ Quick Twist

✓ Quick Twist

✓ Quick Twist

✓ Quick Twist

✓ Automatic

✓ Manual

✓ Automatic

✓ Automatic

✓

✓

✓

✓

40 - 250 kg

30 - 200 kg

30 - 200 kg

40 - 450 kg

3 Year

3 Year

3 Year

3 Year

2000 x 880 x 200mm

2000 x 900 x 180mm

2000 x 900 x 200mm

King Single 2000 x 1050 x 250 mm

2000 x 1050 x 200mm

2000 x 1050 x 180mm

2000 x 1050 x 200mm

Wide 2000 x 1219 x 250 mm



Showrooms

- NSW** Lane Cove West, 20/12 Mars Road, 2066
- NSW** Kingsgrove, B3/15 Forrester Street, 2208
- NSW** Northmead, 3D/6 Boundary Road, 2152
- QLD** Browns Plains, 3/59 Eastern Road, 4118



Offices

- NSW** Lane Cove West, 12/12 Mars Road, 2066
- VIC** Heatherton, 1/1-9 Arco Lane, 3202
- QLD** Browns Plains, 3/59 Eastern Road, 4118



Phone

1300 738 885

Between 8:30am and 5.30pm (AEST)



Email

novis@novis.com.au

We will respond within 24 hours



Online

novis.com.au

For product information
and online support

Our Customer Service Team is available for professional advice and personalised sales support. Request a visit or product demonstration from one of our friendly team members.



**facebook.com/
novis.com.au**



**youtube.com/
@NovisHealthcareAU**



**linkedin.com/
company/
novishealthcare**

enabling independence